

### NOTES

1. THE CONTRACTOR IS SPECIFICALLY CAUTIONED THAT THE LOCATION AND/OR ELEVATION OF EXISTING UTILITIES AS SHOWN ON THESE PLANS IS BASED ON RECORDS AND WHERE POSSIBLE MEASUREMENTS TAKEN IN THE FIELD. THIS INFORMATION IS NOT TO BE RELIED UPON AS BEING EXACT OR COMPLETE. THE CONTRACTOR MUST CALL TENNESSEE ONE CALL AND ANY UTILITY THAT DOES NOT SUBSCRIBE TO ONE CALL AT LEAST 72 HOURS BEFORE ANY EXCAVATION. TO REQUEST EXACT FIELD LOCATION OF THE UTILITIES, IT SHALL BE THE RESPONSIBILITY OF THE CONTRACTOR TO RELOCATE ALL EXISTING UTILITIES WHICH CONFLICT WITH THE PROPOSED IMPROVEMENTS SHOWN ON THE PLANS.
2. ALL DIMENSION REFERENCE FACE OF CURB.
3. SURVEY BY BILLY G. KNIGHT, RLS (PH: 423-674-0384).
4. ALL SITE WORK SHALL BE COORDINATED WITH THE ARCHITECT AND OWNER TO MAINTAIN ACCESS TO THE EXISTING SCHOOL AS REQUIRED BY SCHOOL ACTIVITIES.
5. PRIOR TO INSTALLING BITUMINOUS SEAL COAT IN THE WEST PARKING LOT, THE CONTRACTOR SHALL PATCH ALL AREAS CUT OUT PER THE DEMOLITION PLAN WITH 6" OF BASE STONE AND 3-1/2" OF BINDER FLUSH WITH EXISTING SURFACE.

### LEGEND

- TRELINE
- TREE TO REMAIN
- POWER POLE
- GUY WIRE
- LIGHT POLE
- STORM INLET
- FIRE HYDRANT
- VALVE
- MANHOLE
- SEWER CLEANOUT
- NEW SIDEWALK
- NEW SIDEWALK (SEE ARCH. PLANS FOR LAYOUT)
- NEW RETAINING WALL
- NEW BUILDING
- INDICATES DISABLED SPACE
- PROPERTY LINE
- NEW FENCE (RELOCATED)
- NEW SITE RETAINING WALL

NO.	REVISIONS	DATE

**BARBER & McMURRY INCORPORATED**  
 ARCHITECTS-PLANNERS-CONSULTANTS | ESTABLISHED 1915

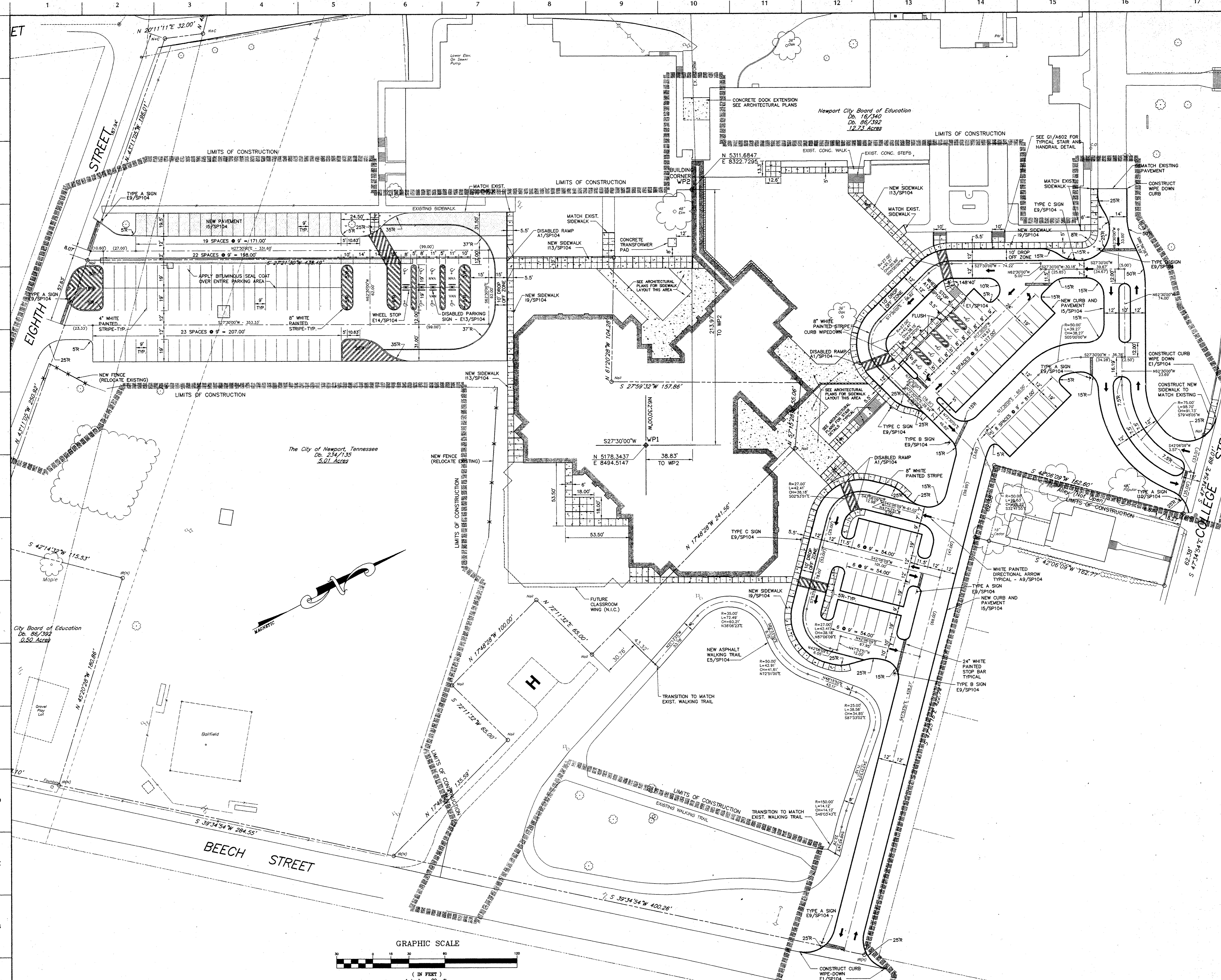
623 LINDSAY PLACE KNOXVILLE TN 37919 423-546-7441 FAX 423-546-0242

**LAND DEVELOPMENT SOLUTIONS**  
 310 SIMMONS RD., SUITE K • KNOXVILLE, TENNESSEE 37922 • PH: 423-671-2281

**ADDITIONS TO NEWPORT GRAMMAR SCHOOL**  
 Newport, Tennessee

### LAYOUT PLAN

	DATE	3 Apr 00
	SCALE	1" = 30'
	PROJECT NO.	976203
	PROJECT NAME	SP102



**A1 LAYOUT PLAN**  
 1"=30'

Plotted 4/03/00